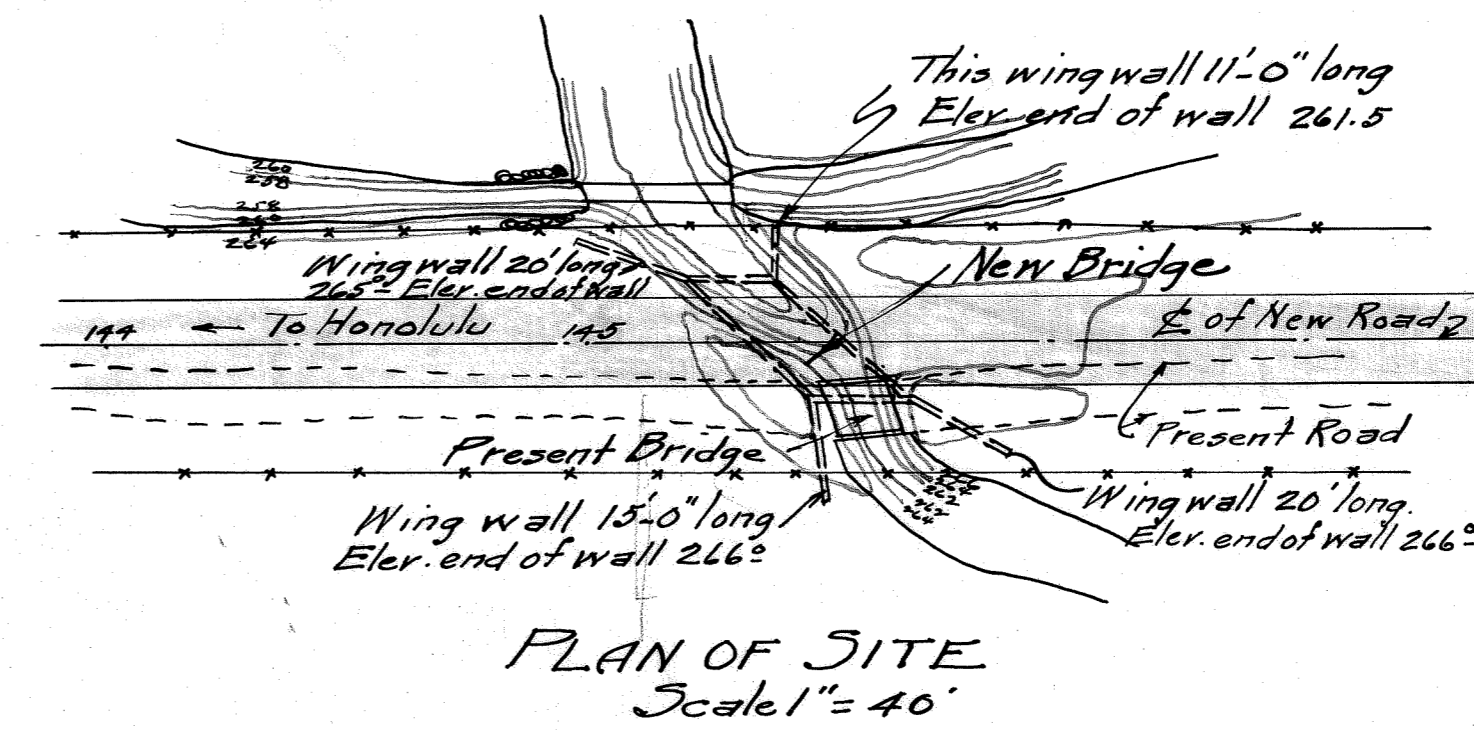
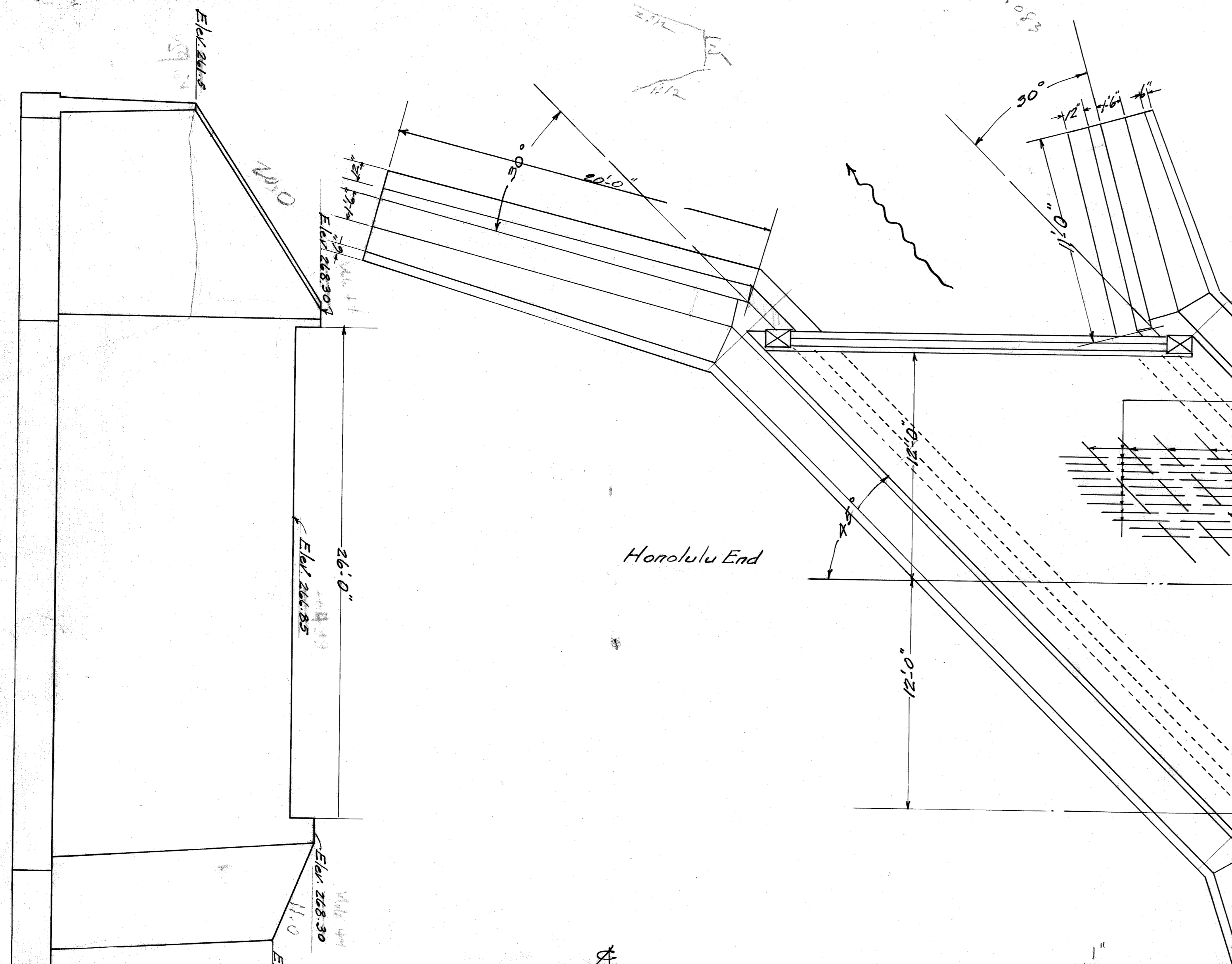


ELEVATION OF ABUTMENT (Waianae End)

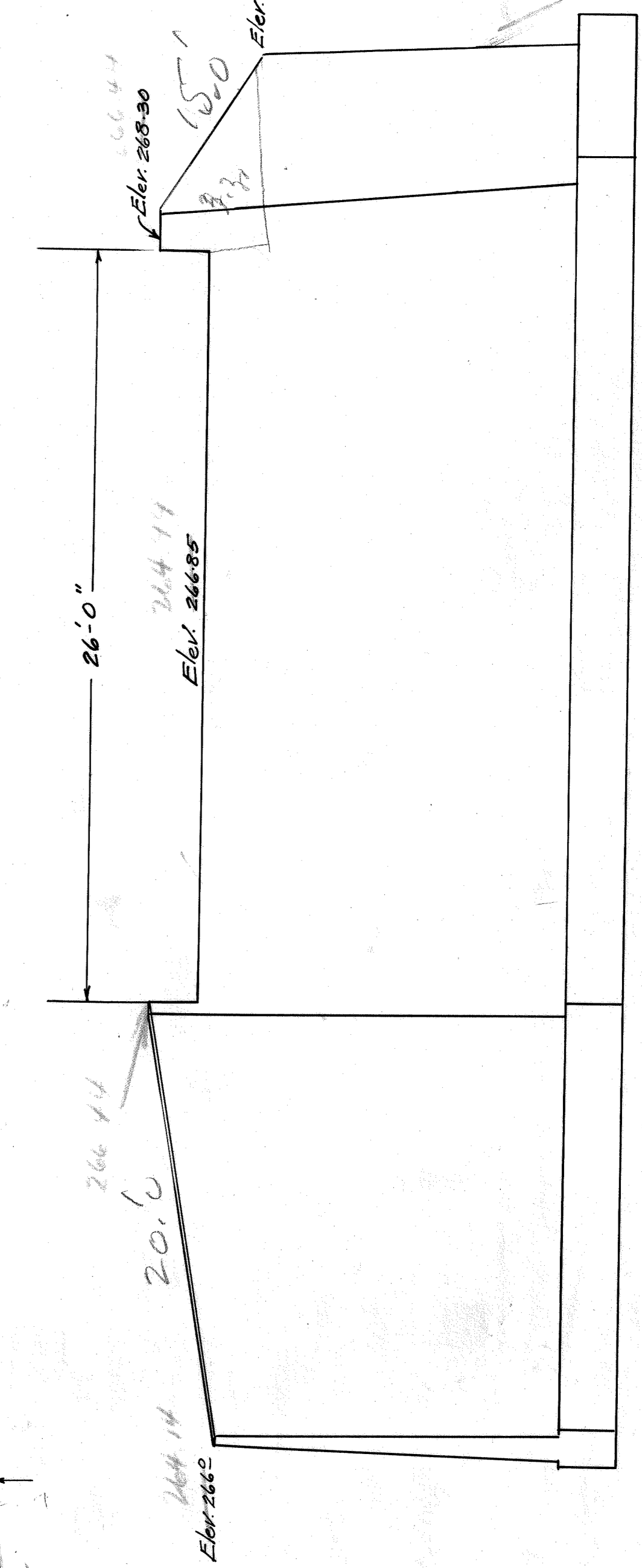


Typical Slab Reinforcement
 1/8" Bars 5" O.C. Alternate bars bent
 @ alternating first with (1) then with (2)
 1/2" Bars 18" O.C.

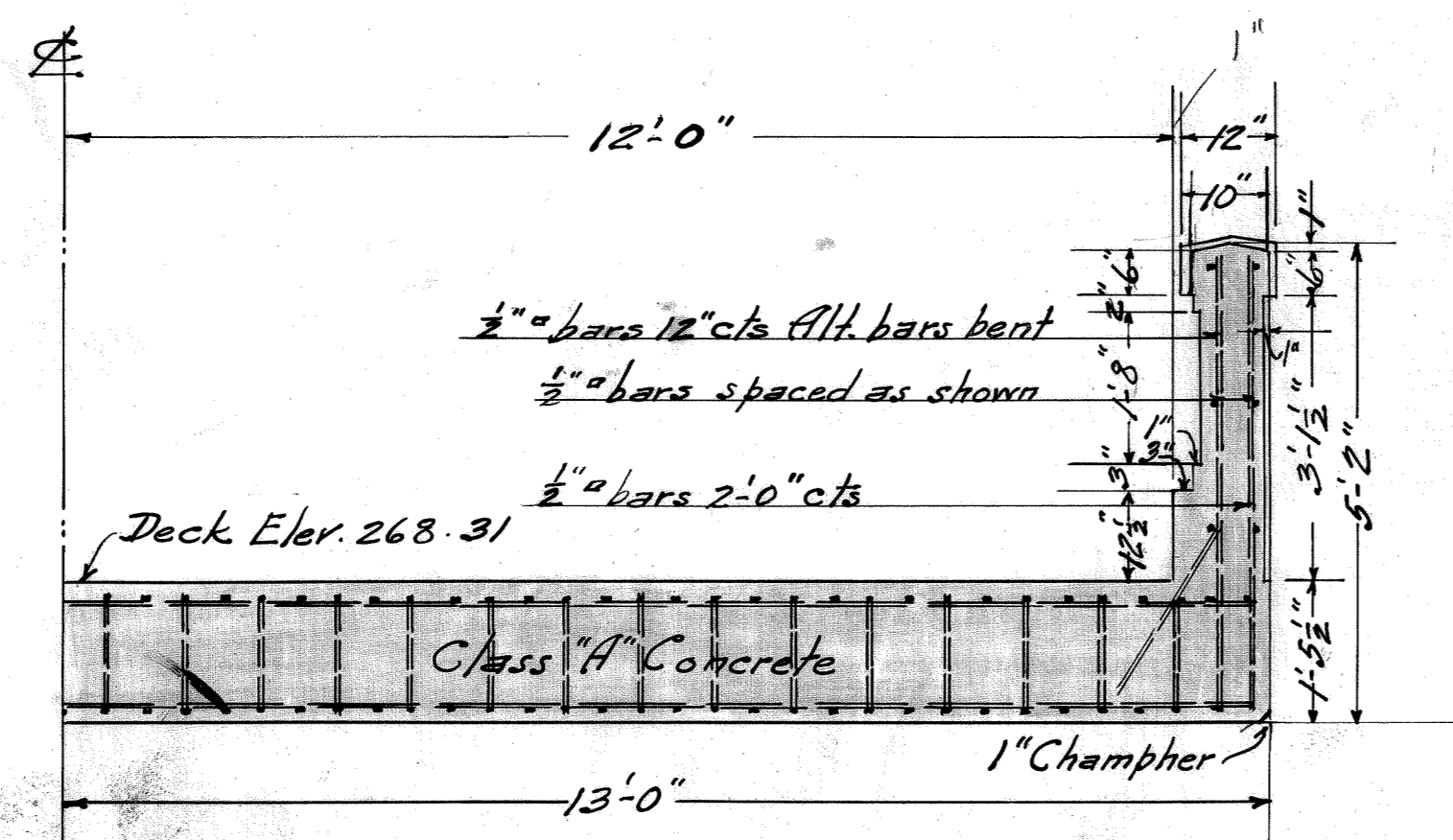
Honolulu End

Road Waianae End

ELEVATION OF ABUTMENT (Honolulu End)

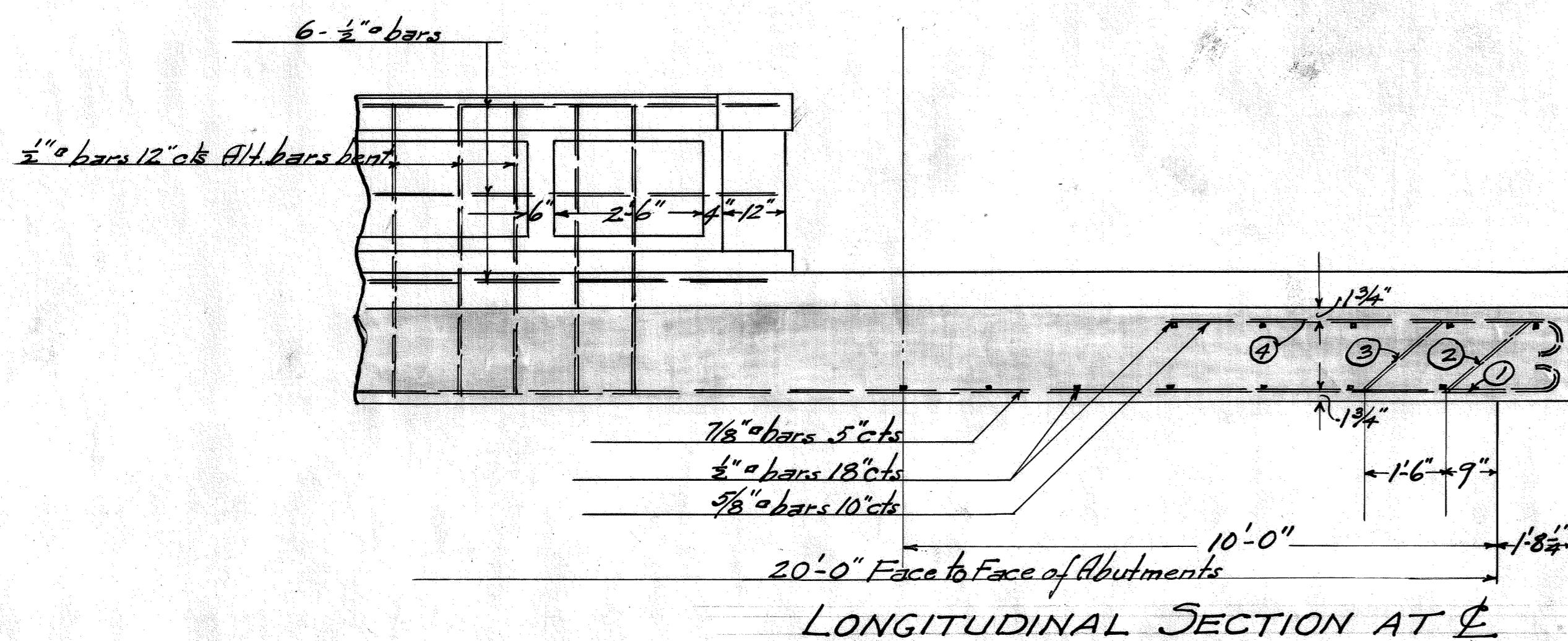


PLAN OF BRIDGE Scale 1/4" = 1'-0"



OUTSIDE ELEVATION

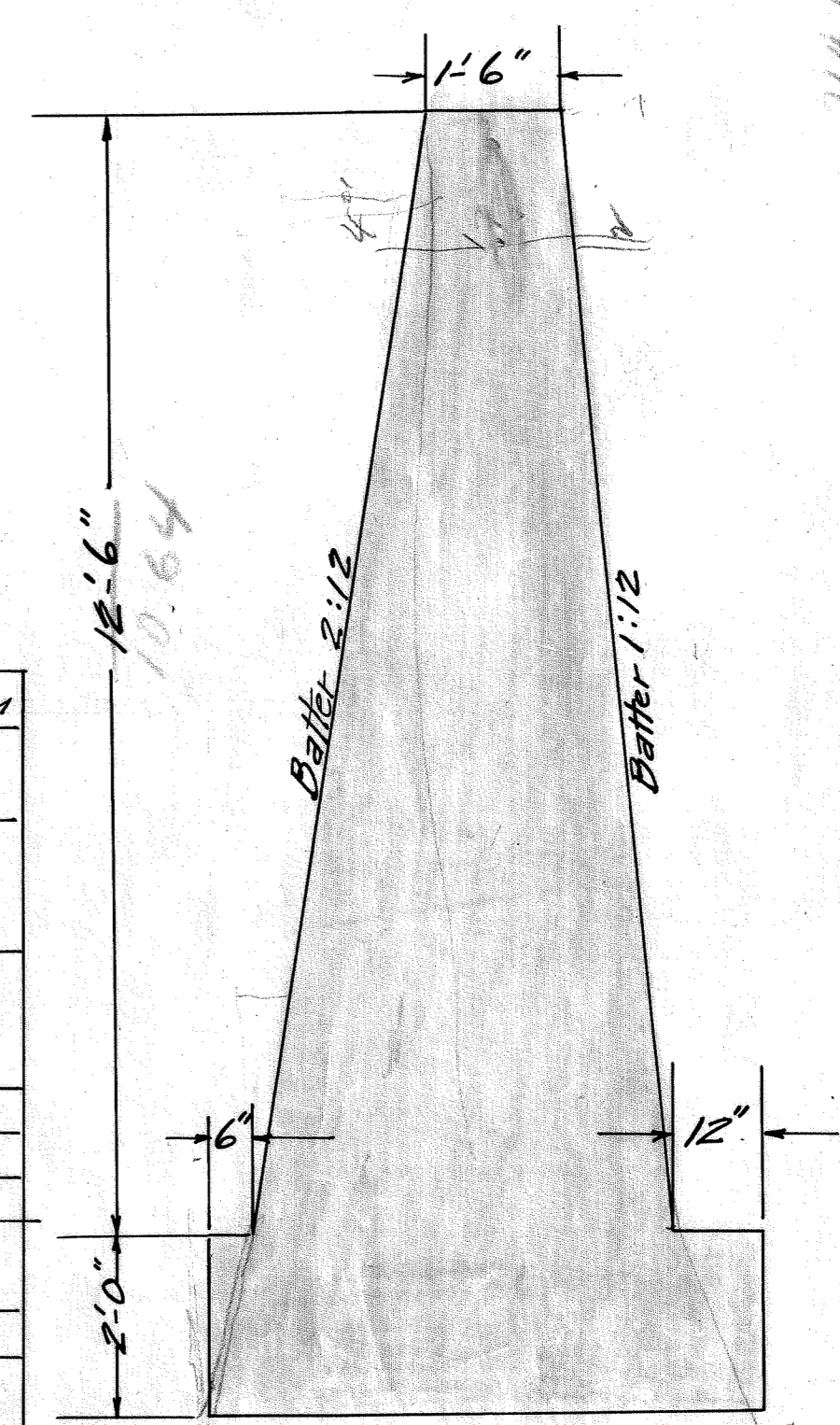
TYPICAL SECTION THRU BRIDGE
 LINE A-A. Scale 1/2" = 1'-0"



LONGITUDINAL SECTION AT E

SCHEDULE OF REINFORCEMENT

ITEM	LOCATION	Pos.	SIZE	LENGTH	TOTAL LENGTH	BENDING	WT. PER FT.	TOTAL WT.	ITEM
1	Slab	31	7/8"	25'-0"	775'-0"		260	2015.0	1
2	"	16	7/8"	25'-0"	400'-0"		260	1040.0	2
3	"	16	7/8"	25'-8"	410'-8"		260	1069.0	3
4	"	62	3/8"	6'-0"	372'-0"	6'-0"	1.33	495.0	4
5	"	25	1/2"	30'-6"	712'-6"		0.35	776.0	5
6	Handrail	12	1/2"	22'-0"	264'-0"		0.35	225.0	6
7	"	22	1/2"	5'-0"	110'-0"	3'-0" 1/2" 2'-0"	0.35	34.0	7
8	"	44	1/2"	5'-0"	220'-0"		0.35	187.0	8
TOTAL WT.								5901.0 lbs.	



SECTION OF ABUTMENT

ESTIMATED QUANTITY
 Superstructure Class "A" Concrete 40 Cu. Yds.
 Abutments "B" " 278 " "
 Excavation 300 " "

BRIDGE NO. 3

OFFICE OF THE CITY & COUNTY ENGINEER
 HONOLULU, HAWAII
WAIANAE ROAD 246
 EWA JUNCTION TO STA 409+00
 CONCRETE SLAB BRIDGE
 STATION 145+35
DETAILS
 ENGINEER HABA-G.K.L. S.W. DATE Oct. 31, 1922
 DRAFTSMAN S.L.W. CHECKED BY G.M.H.
 SCALE 1/2" = 1'-0"
 APPROVED: *Frederick Post*
 CITY & COUNTY ENGINEER

SHEET 7 OF 10 SHEETS

FILE	POCKET	FOLDER	NO.
4	10	1	36